



SigeA Holding srl

General **Architectural** systems



Meda Group Srl

SigeA Estero Srl

SigeCo Srl

SigeA Senegal Srl

COLLABORATORS

Ermès Barba & Mauro Salvadori - Associated architects

IWALLDESIGN - Dress your wall

Borgo Consulting - Organisational and management Consulting



Danilo Grigoletto.

over the years the execution of big works both on behalf of third party and for the own real estate transactions. The company then specializes in the realization of urbanization works and construction of industrial areas.

Sigea Holding is also involved in maintenance of shopping centres. The experience acquired allows processing 24h/24h in activities for the Public which require quick

The company Sigea Holding Ltd, a leading company in the building sector, started its business in the early sixties, when Louis Grigoletto, the Daniel's father, established a small proprietorship, the Grigoletto Costruzioni Srl, at Via Burago in Villa di Salò.

The tenacity and the entrepreneurial spirit that characterized Mr. Grigoletto senior, became fundamental to the growth of the company which despite the limited economical means, grew and consolidated thanks to quality.

The quick growth allows to the company to reach an excellent visibility in the field and helped to acquire assignments for the execution of public works, construction of industrial buildings and urbanization works besides residential complexes. All this contributed to the development of the company, which had subsequent corporate changes.

The first corporate change took place in 1986 when after the father 's death, Danilo took the reins of the company and brought it to the maximum development. The experience gained by the father enables Danilo Grigoletto to adapt to the market progress and invest in research of new state-of-the-art construction methods.

In 2011 the firm became SIGEA HOLDING Srl.

The company stands out on the territory for the excellent build quality of the works. This allows to achieve

intervention and coordination of more professionals such as electricians, plumbers and general installers. Attention to details, ability to coordinate and managing complex situations are the main characteristics of the company.

The ambition of being always the best in the building construction and getting an external market led Danilo Grigoletto to establish new firms in Africa starting 2010. Many company branches specialized over the years in the construction of roads and residential and State buildings.



Sigea Holding established MEDA GROUP with two partners, SIGEA HOLDING and Mr. DANILO GRIGOLETTO.

Sigea Holding has been growing over the years and working with quality partners.

The customer is followed in each stage, from the choice of the ground to the design and house furnishings.

From the union of Sigea Holding and Mr. Danilo Grigoletto arose the new MEDA GROUP, a company having the strength and the capacity to perform any work within a new vision of eco-sustainable future.

COLLABORATORS



*Management and Organization
consulting company*

*www.borgoconsulting.com
Borgo Pietro Wuhler, 123
25123 BRESCIA
Italia
Tel. +39 0303760486
info@borgoconsulting.com*

*Established by Mr. Paolo Muoio, it assists Italian
and foreign companies in the business development,
providing accounting, tax and financial services.*

ermes barba & mauro salvadori
architetti associati

*www.barbasalvadori.it
Piazza Roma, 3
25089 VILLANUOVA S/C (Brescia)
Italia
Tel. +39 0365 373650
architetti.associati@barbasalvadori.it*

*The Associated Architects Office, Ermès Barba
and Mauro Salvadori is operating since 1989
in the field of the complete architectural project.*

IWALLDESIGN
dress your wall

*www.iwalldesign.com - direzione@iwalldesign.it
IWALLDESIGN is a division of Sigea Holding focused
on the distribution of materials for interior and exterior
finishes, decoration and furnishings.*

*The company was born from the desire to introduce
in the large field of the Interior designer by “unique”
products and materials with a refined taste and
characterized by durability.*

*IWALLDESIGN benefits from the solid founder's
experience in sales and marketing and it stands as
the reference point for Architects, Interior designers
and the best retailers in Italy and those seeking
innovative and design materials.*

History

The first company transformation took place in 1986, when Mr. Danilo established the Danilo Grigoletto construction company and Sigea Holding, undertaking a fruitful way which adapted to new and changing needs of the market and thus brought to the business increase.

In recent years, the countless achievements in both the public and private sectors have led the company to a prestigious position in the construction field in the Brescia territory.

Sigea Holding today works in several areas in the private building field, with projects related to both residential and commercial sectors, offering highly professional and avant-garde services.

Services

Besides the diversification in all building sector including all the phases related to the construction process, Sigea Holding offers a complete service for the integrated maintenance and property rental.

Wherever it operates, Sigea Holding guarantees a quality service, resulting from years of experience in the sector and it is corroborated with a technical and operating structure that meets the highest quality standards.



Construction

The necessary condition for a good overall management of the order lies in the analysis of the project that brings to an essential phase which is work planning and material purchasing and preparation.

The operational phase forecasts the use of advanced technology equipment and provides knowledge and expertise from experienced foremen. These elements assure high fidelity and relevance to the project and the maximum precision in work performance.

The testing phase completes the construction cycle which provides the "turnkey" delivery of works, guaranteeing quality and duration to the customer for the optimisation of the whole investment.

Other services

The wide range of services offered by Sigea Holding is complete with ancillary services. Being its staff highly qualified, the company follows the construction of the buildings in every detail, paying a special attention to the aesthetics, while ensuring quality and safety.

Interior designers highlight rooms with appropriate furniture according to the type of structure and expert ecological designers are able to optimize outdoor spaces.

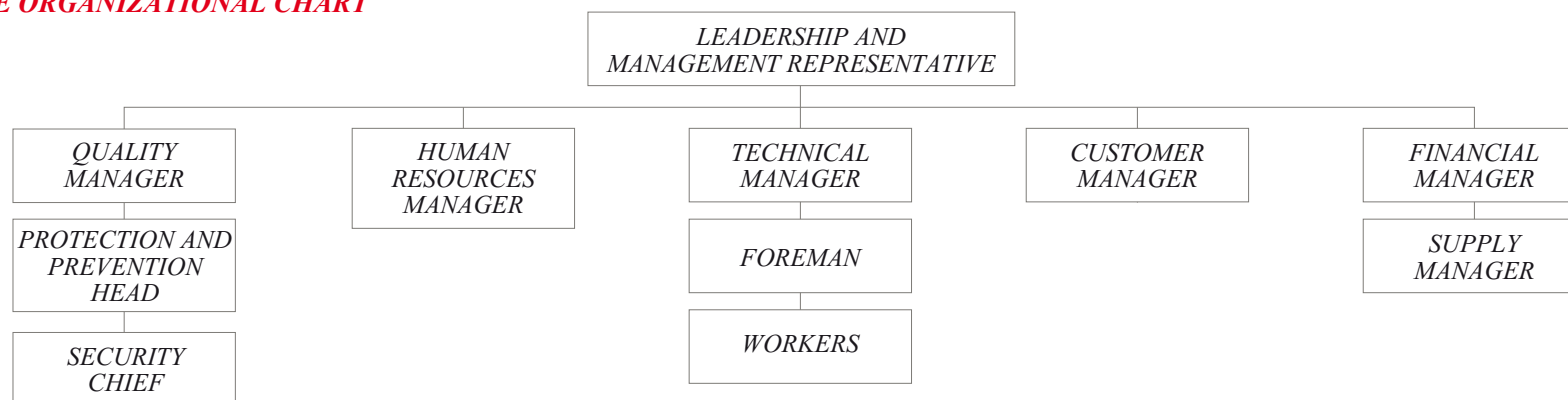
Integrated Maintenance

Sigea Holding has developed an efficient integrated maintenance service by expanding its competencies in the building field and benefiting of a highly qualified staff and synergy with suppliers.

This versatile service, which requires a single contact, is able to face any need as for the maintenance. It is a suitable tool for buildings management and to find the best solutions for any kind of problem, whilst limiting costs.



CORPORATE ORGANIZATIONAL CHART



POTENTIAL BUSINESS

Qualified personnel

- Site manager n° 1
- Employees n° 3
- Site assistants n° 3
- Qualified and specialized workers n° 18

Vehicles and equipments

- Site cars (Citroen C3, Fiat Punto, etc.) n° 6
- Trucks from 55 to 120 q n° 4
- Trucks with cranes (Iveco Eurocargo) n° 2
- Trucks from 330 to 400 q (Iveco Trakker) n° 3
- 3-axle trailer of 300 q n° 1
- Concrete plants of 0.5 m³ (Oru) n° 2
- Concrete plant of 1 m³ n° 1
- Generators from 30 to 100 Kw (Cat, Atlas, etc.) n° 2

- Compressors from 3000 to 4000 l. n° 3
- Low rotation cranes from 20 to 35 m (Benedini, etc.) n° 4
- Tower cranes from 40 to 65 m (Comedil, etc.) n° 4
- Crawler loader from 50 to 110 hp (Jcb, Cat, etc.) n° 2
- Wheel loader (Cat 966) n° 1
- Telescopic rotation booms of 21 m, 50 q capacity n° 2
- Forklifts (Manitou) n° 2
- Excavator with telescopic arm (Jcb) n° 1
- Miniexcavator 30 q + hammer (Jcb) n° 1
- Minexcavator 35 to 80 q + hammer n° 3
- Dumpers n° 2
- Box offices n° 8
- Wall armor panels m² 1.000
- Props n° 2
- Sheet bending machines n° 2
- Pumps for substrates Scaffoldings "Ceta" n° 10.500
- Mobile yard fenceings lm 2.500



Project for Toscolano Maderno



Some of our realizations



Complex of 50 apartments



Residence IL CEDRO, Salo'



Residence IL QUADRIFOGLIO, Nave



Complex of 50 apartments



Polytechnic school



Residential building



Residence IL CEDRO, Salo'



Commercial building



Dwelling units



Leonardo da Vinci



Libya- Dwelling unit



Commercial building



References and experiences

Hereunder is a list of some most important construction works performed in recent years:

- MUSCOLINE (Bs). Road reorganization and urbanization works
- VILLA DI SALO' (Bs). Industrial building of 2000 m²
- BRESCIA GAS (Bs). n° 50 gas distributors
- GAVARDO (Bs). Industrial building of 1.000 m²
- TOSCOLANO (Bs). School building and adjoining building used as a gymnasium
- TOSCOLANO (Bs). n° 16 apartments
- PORTESE (Bs). Industrial building of 1.500 m²
- CUNETTONE di SALO' (Bs) Urbanization works and precast buildings of 5.000 m²
- CUNETTONE DI SALO' (Bs). Industrial building of 3.400 m² and urbanization works
- PUEGNAGO D/GARDA (Bs) n° 4 adjoining houses of 800 m²
- IMOLA (Bo) n° 15 apartments and urbanization works
- CUNETTONE di SALO' (Bs) Commercial building of 6.000 m² and urbanization works





- SALO' (Bs) Parking building of 15.000 m² of Officine Rebusco property
- CUNETTONE di SALO' (Bs) Commercial building of 8.000 m² of SAIT SpA property
- CUNETTONE di SALO' (Bs) Precast buildings of 5.000 m² and urbanization works
- CUNETTONE di SALO' (Bs) Industrial buildings of 3.500 m² with infrastructure works
- SOIANO DEL LAGO (Bs) Underground garages at Garda Golf
- VILLA di SALO' (Bs) n° 10 apartments of 1.200 m²
- CUNETTONE di SALO' (Bs) Commercial building of 1.700 m² of A3 property
- CUNETTONE di SALO' (Bs) Commercial complex and 7.000 m² apartments of CAEP property
- CUNETTONE DI SALO' (Bs) Commercial building and 3.000 m² apartments
- PADENGHE S/GARDA (Bs) n° 17 apartments of 1.800 m²
- MANERBA D/GARDA (Bs) Residential complex with 25 apartments
- CUNETTONE di SALO' (Bs) Industrial warehouse and 4.000 m² apartments
- CALVAGESE D/R (Bs) n° 10 adjoining houses
- CUNETTONE di SALO' (Bs) Commercial complex of 4.000 m²





- SALO' (Bs)..... Recovery plan "Ex Cedrinca" with n° 40 apartments and underground garages
- CUNETTONE di SALO' (Bs)..... New headquarters of the "Garda Volunteer Group" on 2.500 m²
- PORTESE (Bs) New building with 18 residential units
- SALO' (Bs)..... Recovery plan "Former St. Ursula" for 40 apartments, 8 commercial units, 90 underground garages on three floors
- SALO' (Bs)..... Underground private and public garages with commercial buildings and apartments
- SALO' (Bs)..... Recovery plan for construction of a 10 apartment building in via Brunati
- NAVE (Bs)..... Residential and commercial complex of 52.000 m² of Il Quadrifoglio property
- SALO' (Bs)..... Recovery plan "Amadei former sports field" with a residential complex of 60 apartments and underground garages
- TOSCOLANO MADERNO (Bs)..... n° 15 apartments of 1.000 m² in Monte Maderno
- TOSCOLANO MADERNO (Bs)..... n° 10 apartments in a tourist hotel of 900 m² for 1.000.000,00 €
- SALO' (Bs)..... n° 12 apartments in Barbarano
- NAVE (Bs)..... Residential and commercial complex of 45.000 m² with urbanization works on 31.000 m²
- SALO' (Bs)..... Residential n° 8 apartment building
- GARDONE RIVIERA (Bs)..... Commercial building with underground parking





Iraq- Dwelling units



BRIX DISTRIBUZIONE

LOGISTICA EATON

Logistics office

